

DuPont™ Lumisena™ fungicide seed treatment helps ensure your Pioneer® brand soybean seed investment is covered when it needs it most.



Fungicide Seed Treatment and Biological

Insecticide Seed Treatment

Nematicide and SDS Seed Treatment

Inoculant

Lumisena™

FUNGICIDE SEED TREATMENT
oxathiapiprolin

EverGol
Energy®

Penflufen
Prothioconazole
Metalaxyl

PPST 2030
Biologicals, Polymer and Colorant

Gauche® (imidacloprid)

ILeVO® (fluopyram)

120+ inoculant plus extender (rhizobia)



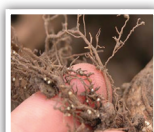
Bean Leaf Beetle



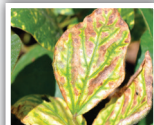
Early Season Aphid



Seed Corn Maggot



Nematode



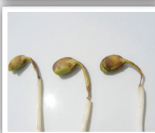
Sudden Death Syndrome



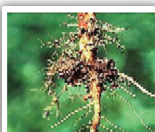
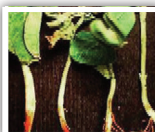
Nitrogen Fixation



Phytophthora



Pythium



Fusarium



Rhizoctonia Root Rot



Root Growth Promotion



Information for Pioneer Sales Professionals - Do Not Distribute



LumiGEN Technologies - Soybean Portfolio Details

Treatment	Application Rate (seed size = 2,800 seeds/lb)	Active Ingredient	Activity & Benefits
PPST 2030 Biological + Color/Polymer	1.0 fl oz/140k	<i>Bacillus subtilis</i> and <i>Bacillus pumilus</i>	The biological enhances early-season root and plant growth. The green color/polymer provides a distinctive green color plus a polymer coating to minimize dust-off and improve seed flow through planting and seed handling equipment.
Gauche® 600 Insecticide	0.80 fl oz/140k	Imidacloprid	Protection against early-season insect feeding from overwintering bean leaf beetles, seedcorn maggot and suppression of soybean aphids.
EverGol® Energy Fungicide	0.50 fl oz/140k	Penflufen	Excellent activity against <i>Rhizoctonia</i> root rot plus additional protection against <i>Fusarium</i> root rot.
		Prothioconazole	Excellent activity against <i>Fusarium</i> root rot while providing disinfection activity against seedborne pathogens.
		Metalaxyl	Excellent activity against <i>Pythium</i> sp. damping off.
Lumisena™	0.284 fl oz/140k	Oxythiapirolin	Excellent activity against <i>Phytophthora sojae</i> damping off.
ILeVO® Fungicide & Nematicide	0.59 to 1.18 fl oz/140k	Fluopyram	Control of SDS (<i>Fusarium viguliforme</i>) and Soilborne Nematodes (<i>Heterodera glycines</i> , <i>Meloidogyne incognita</i> , <i>Rotylenchulus reniformis</i> , <i>Pratylenchus</i> spp., <i>Hoplolaimus</i> sp.)
120+	1.0 fl oz/140k	Rhizobia Inoculant plus Extender	Delivers high concentration of beneficial Rhizobia bacteria for nitrogen fixation. Extender product helps prolong Rhizobia up to 120+ following application.

Lumisena™
FUNGICIDE SEED TREATMENT

ILeVO®

EverGol Energy®, Gauche® and ILeVO® are registered trademarks of Bayer.

The foregoing is provided for informational use only. Please contact your Pioneer sales professional for information and suggestions specific to your operation.

Product performance is variable and depends on many factors such as moisture and heat stress, soil type, management practices, and environmental stress as well as disease and pest pressures. Individual results may vary.

Components of LumiGEN™ system for soybeans are applied at a Corteva Agriscience™, Agriculture Division of DowDuPont production facility, or by an independent sales representative of Corteva Agriscience or its affiliates. Not all sales representatives offer treatment services, and costs and other charges may vary. See your sales representative for details. Seed applied technologies exclusive to Corteva Agriscience and its affiliates.

Pioneer® brand products are provided subject to the terms and conditions of purchase which are part of the labeling and purchase documents.

© TM SM Trademarks and service marks of DuPont, Dow AgroSciences or Pioneer, and their affiliated companies or their respective owners.

© 2019 PHIL 19D-2039