

# P14830Q

(Q,LL,RR2)



## Key Statistics

Positioned for Streator, Illinois (61311)



**CRM**

114

**SILK CRM**

112

**GDUS TO SILK**

1390

**PHY. CRM**

112

**GDUS TO PHY. MAT.**

2700

## Management Comments

- Leader 114 CRM hybrid with top end yield potential
- Good roots and disease package allows hybrid to work most challenges.
- Best results when planted early and at moderate populations in highly managed soils.

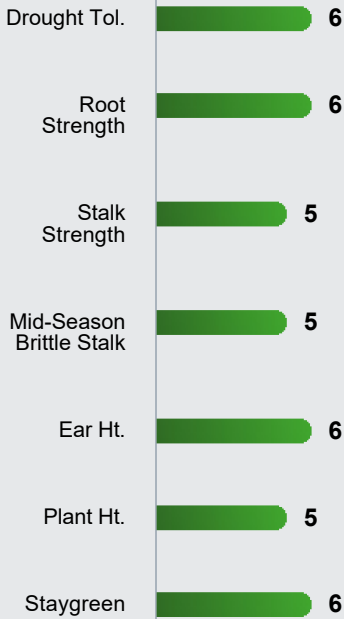
Characteristic Scores

Disease Scores

Characteristic Scores

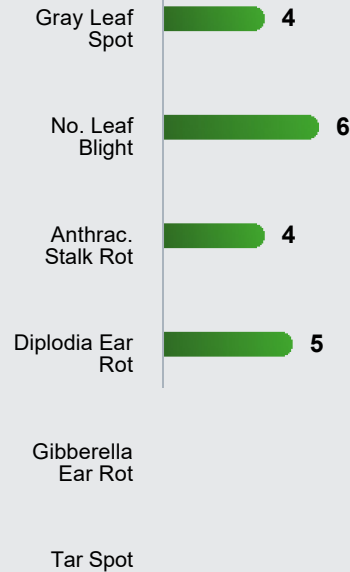
Disease Scores

## Product Ratings



Hybrid Family **P14830**

## Product Ratings

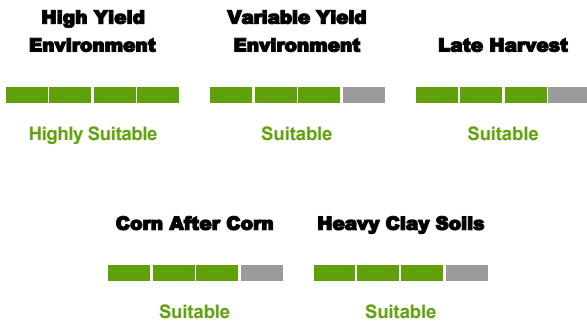


## Trait Score Ratings:

9 = Excellent; 1 = Poor;

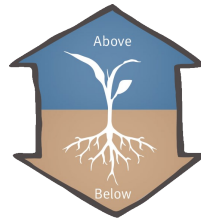
Blank = Insufficient Data.

## Suitability Ratings



## More Information

### Refuge



#### Integrated Refuge

95% (RW, YGCB, HXX, LL, RR2)

5% (LL, RR2)

IMPORTANT: Trait rating scores provide key information useful in selection and management of Pioneer® brand products in your area. Information and ratings are based on comparisons with other Pioneer brand products, not competitive products. Information and scores are assigned by Pioneer Research Managers. Scores are based on period-of-years testing through 2022 harvest and were the latest available at time of printing. Some scores may change after 2023 harvest. Scores represent an average of performance data across areas of adaptation, multiple growing conditions, and a wide range of both climate and soil types, and may not predict future results. All products within a hybrid family receive the same score unless observations indicate a significant difference. Individual product responses are variable and subject to a variety of environmental, disease and pest pressures. Please use this information as only one component of your product positioning decision. Refer to [www.pioneer.com](http://www.pioneer.com) or contact a Pioneer sales professional for the latest and most complete listing of traits and scores for each Pioneer brand product and for product placement and management suggestions specific to your operation and local conditions.



TECHNOLOGY SEGMENT: AM1 - Optimum® AcreMax® 1 insect protection system with an integrated corn rootworm refuge solution includes HXX, LL, RR2. Optimum AcreMax 1 products contain the LibertyLink® gene and can be sprayed with Liberty® herbicide. The required corn borer refuge can be planted up to half a mile away. AM - Optimum® AcreMax® insect protection system with YGCB, HX1, LL, RR2. Contains a single-bag integrated refuge solution for above-ground insects. In EPA-designated cotton-growing counties, a 20% separate corn borer refuge must be planted with Optimum AcreMax products. AMT - Optimum® AcreMax® TRIssect® insect protection system with RW,YGCB,HX1,LL,RR2. Contains a single-bag refuge solution for above- and below-ground insects. The major component contains the Agrisure® RW trait, the Bt trait, and the Herculex® I gene. In EPA-designated cotton-growing counties, a 20% separate corn borer refuge must be planted with Optimum AcreMax TRIssect products. AMX - Optimum® AcreMax® Xtra insect protection system with YGCB, HXX, LL, RR2. Contains a single-bag integrated refuge solution for above- and below-ground insects. In EPA-designated cotton-growing counties, a 20% separate corn borer refuge must be planted with Optimum AcreMax Xtra products. AMXT (Optimum® AcreMax® XTreme) - Contains a single-bag integrated refuge solution for above- and below-ground insects. The major component contains the Agrisure® RW trait, the Bt trait and the Herculex® XTRA gene. In EPA-designated cotton-growing counties, a 20% separate corn borer refuge must be planted with Optimum AcreMax XTreme products. Q (Qrome®) - Contains a single-bag integrated refuge solution for above- and below-ground insects. The major component contains the Agrisure® RW trait, the Bt trait, and the Herculex® XTRA gene. In EPA-designated cotton-growing counties, a 20% separate corn borer refuge must be planted with Qrome products. Qrome products are approved for cultivation in the U.S. and Canada. They have also received approval in a number of importing countries, most recently China. For additional information about the status of regulatory authorizations, visit <http://www.biotradestatus.com/>. YGCB,HX1,LL,RR2 (Optimum® Intrasect®) - Contains the Bt trait and Herculex® I gene for resistance to corn borer. YGCB,HXX,LL,RR2 (Optimum® Intrasect® Xtra) - Contains the Bt trait and the Herculex® XTRA gene for resistance to corn borer and corn rootworm. RW,HX1,LL,RR2 (Optimum® TRIssect®) - Contains the Herculex® I gene for above-ground pests and the Agrisure® RW trait for resistance to corn rootworm. AML - Optimum® AcreMax® Leptra® products with AVBL, YGCB, HX1, LL, RR2. Contains a single-bag integrated refuge solution for above-ground insects. In EPA-designated cotton-growing counties, a 20% separate corn borer refuge must be planted with Optimum AcreMax Leptra products. AVBL,YGCB,HX1,LL,RR2 (Optimum® Leptra®) - Contains the Agrisure Viptera® trait, the Bt trait, the Herculex® I gene, the LibertyLink® gene and the Roundup Ready® Corn 2 trait. HX1 - Contains the Herculex® I insect protection gene which provides protection against European corn borer, southwestern corn borer, black cutworm, fall armyworm, lesser corn stalk borer, southern corn stalk borer, and sugarcane borer; and suppresses corn earworm. Roundup Ready® is a registered trademark used under license from Monsanto Company. Liberty®, LibertyLink® and the Water Droplet Design are registered trademarks of BASF. Agrisure® and Agrisure Viptera® are registered trademarks of, and used under license from, a Syngenta Group Company. Agrisure® technology incorporated into these seeds is commercialized under a license from Syngenta Crop Protection AG.